

SLA25 Series

Linear Slide Actuator

Designed for precision movement applications such as scanning found in the semiconductor, electronic and biotech industries.

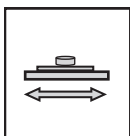
A very light moving mass results in high accelerations with no backlash. The SLA incorporates precision Cross Roller Guides with anti-creep protection for increased stiffness and lower friction. The Moving Coil drive is centered between Cross Rollers thus eliminating moment effects from the drive. The SLA is available with encoder resolution down to 50 nm.

SLA25 Series

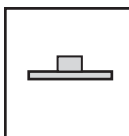
Dimensions [mm]	40x65x25
Stroke [mm]	10 +1/-0
Peak Force [N]	4 @1.5A, 24VDC
Encoder Resolution [μ m]	from 5 down to 0.05
SMAC's Patented Cross Roller Guide Integrated	'Soft-Land' Technology



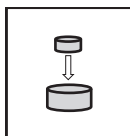
Applications



Scanning/
Positioning

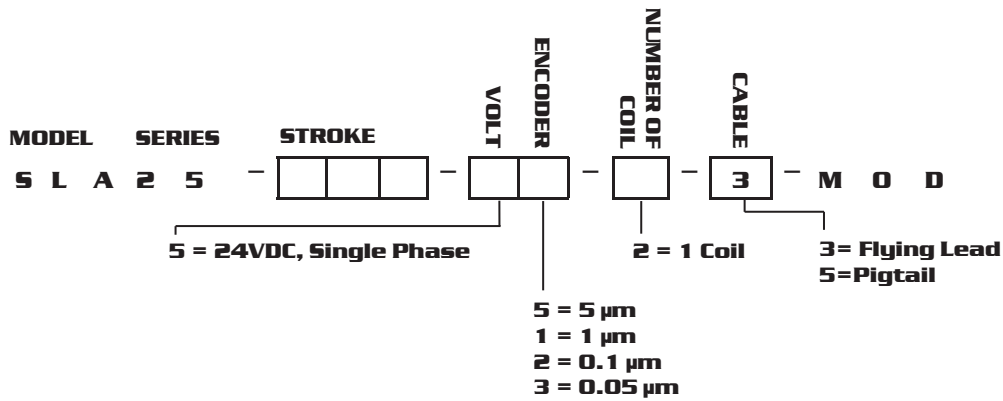


Measuring



Assembly

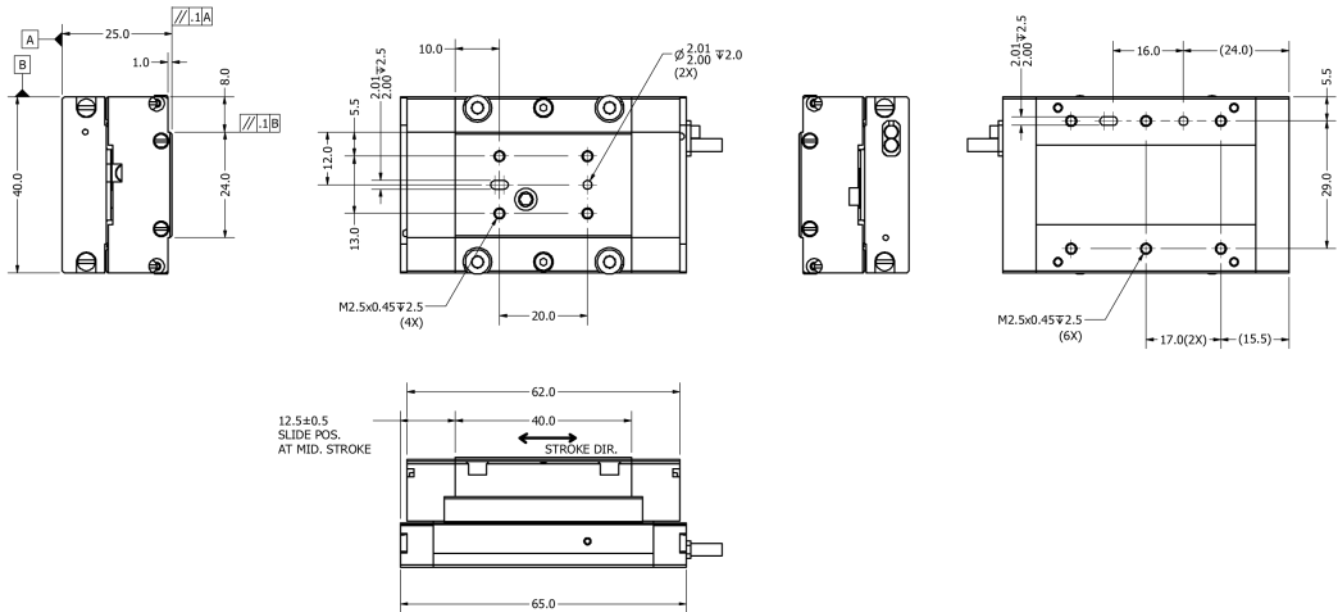
PART NUMBERING



SPECIFICATION

Model	Voltage [DC]	Size: WxLxH [mm]	Stroke [mm]	Peak Force [N]	Continuous Force [N]	Force Constant [N/A]	Max. Current [Amp]	Moving Mass [kg]	Weight [kg]
SLA25-010-55-1	24	40x65x25	10	4	1.6	2.7	1.5	0.05	0.16

DIMENSIONS (SLA25-010-5 model)



Regional Distributor



SMAC Headquarters
www.smac-mca.com
 5807 Van Allen Way, Carlsbad, CA 92008
 Tel: 760-929-7575 | Fax: 760-929-7588
 Email: info@smac-mca.com